



# TIS SMART WATER METER

Data Sheet Rev 3.2

Model: TIS-WTR-MTR-15Z  
TIS-WTR-MTR-20Z  
TIS-WTR-MTR-25Z



## OVERVIEW

Smart water meters are devices that measure and communicate water usage from consumer to provider to facilitate water management and proper billing. These meters are equipped with an electronic computing unit, or ECU, that facilitates communication between the meter and the supplier.

### KEY BENEFITS

- + Meet GB/T 778.1~3-2007 standard level 2
- + Low power consumption design, usually do not need to supply power, only when reading the meter
- + Adopt advanced data coding and verification mode, high communication reliability

### KEY FEATURES

- ★ Meet the design requirements of EMC, ESD, EMI and other electronic products in terms of electromagnetic compatibility, and reach the industry-leading level
- ★ Combined with the upper computer system, establish a remote automatic meter reading management system to truly realize meter reading automation.
- ★ Water meter communication protocol support, MODBUS RTU protocol, TIS Protocol when linked to TIS-232-485 GTY



# TIS SMART WATER METER

Model: TIS-WTR-MTR-15Z






TIS-WTR-MTR-20Z

TIS-WTR-MTR-25Z

# TIS

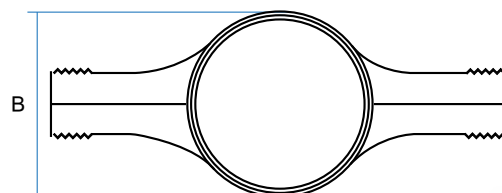
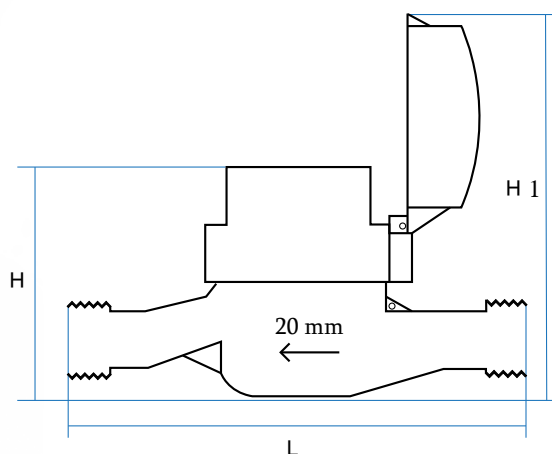


## PRODUCT SPECIFICATIONS

	<b>Specifications</b>	four-wire bus system two power cables two RS-485 lines	9-24V power input
		Bus pin ESD protection Short circuit current limit Protection against faults	exceeds 10kV open circuit, short circuit and idle bus
	<b>Communication</b>	Communication with host computer Communication transmission rate Communication transmission maximum distance	Modbus RTU 2400 BPS 1200m
	<b>Dimensions</b>	Length x Width x Height	165mm x 90mm x 120mm (DN 15mm) 195mm x 90mm x 120mm (DN 20mm) 225mm x 90mm x 120mm (DN 25mm)
	<b>Temperature range</b>	Operation	-15...+45°C
	<b>Air humidity</b>		<95% non-condensing

## Traffic parameters

DN (mm)	Measure-ment level	Q4	Q3	Q2	Q1
15	2	3.125 m³/h	2.500 m³/h	0.050 m³/h	0.03125 m³/h
20	2	5.000 m³/h	4.000 m³/h	0.080 m³/h	0.05000 m³/h
25	2	7.875 m³/h	6.300 m³/h	0.126 m³/h	0.07785 m³/h



Copyright © 2024 TIS, All Rights Reserved

TIS Logo is registered trademark of TIS CONTROL.  
All of the specification are subject to change without notice.

TIS CONTROL PTY LIMITED  
SA, AUSTRALIA

TIS CONTROL LIMITED  
Wanchai, Hong Kong

[www.tiscontrol.com](http://www.tiscontrol.com)